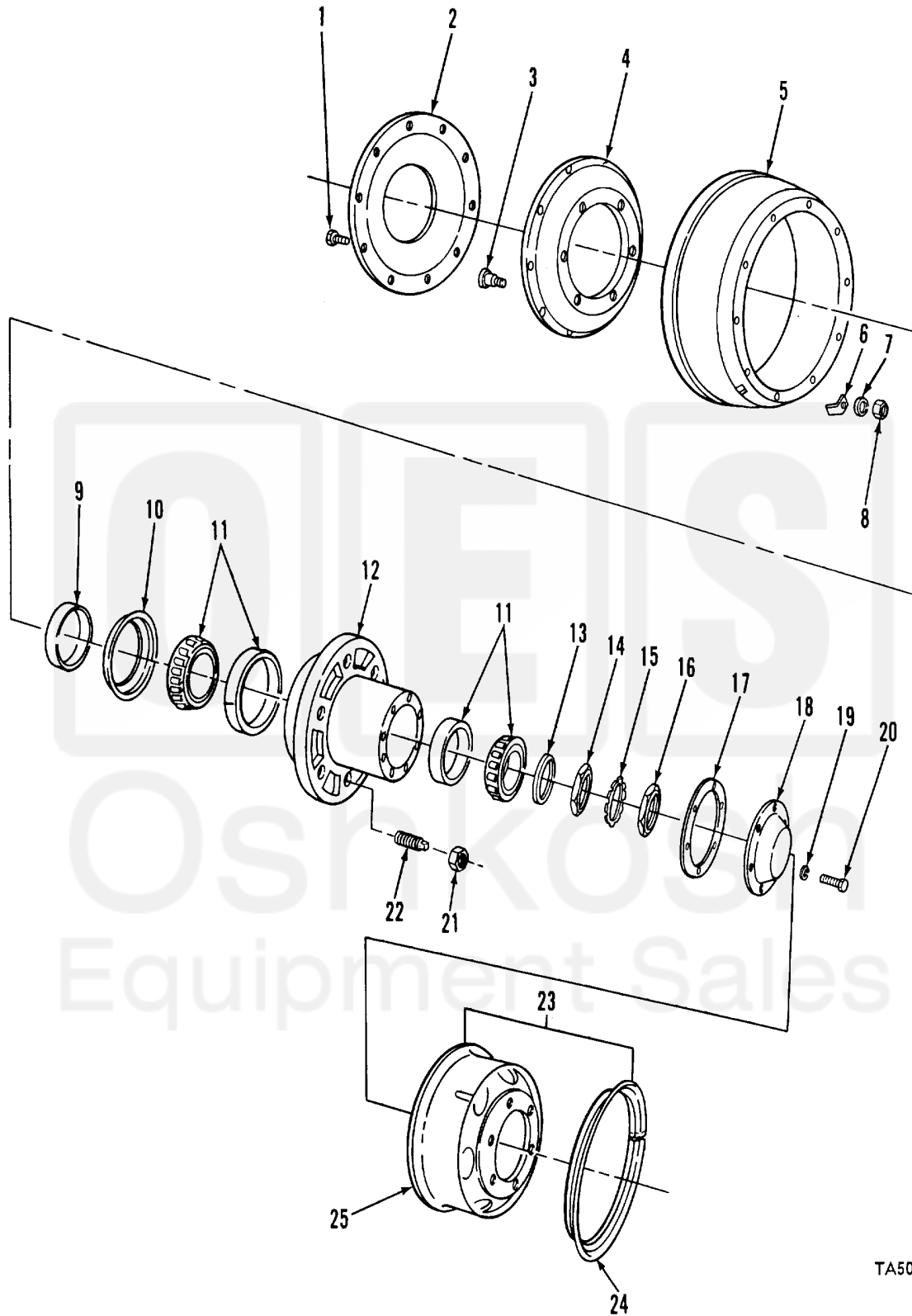


SECTION II

TM9-2330-203-14&P



TA506766

FIGURE 18. WHEEL AND HUB.

SECTION II				TM9-2330-203-14&P	
(1)	(2)	(3)	(4)	(5)	(6)
ITEM	SMR		PART		
NO	CODE	CAGEC	NUMBER	DESCRIPTION AND USABLE ON CODES (UOC)	QTY
GROUP 13 WHEELS AND TRACKS					
GROUP 1311 WHEEL ASSEMBLY					
FIG 18 WHEEL AND HUB					
1	PAOZZ	19207	7409389	BOLT, RIBBED SHOULDE 7/16-20UNF X 1- .....	20
2	PAOZZ	19207	8343588	DEFLECTOR, DIRT AND LIQUID .....	1
				UOC:842	
2	PAOZZ	19207	7409556	DEFLECTOR, DIRT AND LIQUID .....	1
				UOC:843	
3	PAOZZ	96906	MS51946-1	BOLT, RIBBED SHOULDE LEFT .....	10
				UOC:842,844	
3	PAOZZ	96906	MS51946-1	BOLT, RIBBED SHOULDE LEFT .....	6
				UOC:152,843	
3	PAOZZ	96906	MS51S46-2	BOLT, RIBBED, SHOULDE RIGHT .....	10
				UOC:842,844	
3	PAOZZ	96906	MS51946-2	BOLT, RIBBED, SHOULDE RIGHT .....	6
				UOC:842,844	
4	XDOZZ	19207	8710742	ADAPTER, DRUM .....	1
				UOC:152,844	
4	PAOZZ	19207	8343587	ADAPTER .....	1
				UOC:842	
4	XBOZZ	19207	7409380	ADAPTER, DRUM .....	1
				UOC:843	
5	PAOZZ	19207	7409394	BRAKE, DRUM .....	2
6	PAOZZ	19207	7979315	COVER ACCESS .....	1
7	PAOZZ	96906	MS3533E-47	WASHER, LOCK .....	10
8	PAOZZ	96906	MS35690-724	NUT, PLAIN, HEXAGON .....	10
9	PAOZZ	19207	7405553	RING, WIPER .....	2
10	PAOZZ	19207	7975349	SEAL, PLAIN ENCASED .....	2
11	PAOZZ	08162	BT3994	CONE AND ROLLERS, TA.....	2
12	PAOZZ	19207	8710723	HUB, TRAILER WHEEL .....	1
				UOC:152	
12	XAOZZ	19207	8343586	HUB. ....	1
				UOC:842	
12	PAOZZ	19207	7979324	HUB, BODY .....	1
				UOC:843	
12	PAOZZ	19207	871036	HUB, WHEEL .....	1
				UOC:844	
13	PAOZZ	19207	7954291	WASHER, KEY .....	1
				UOC:842,844	
14	PAOZZ	19207	7001725	NUT, PLAIN HEXAGON .....	2
				UOC:152	
14	PAOZZ	19207	7521633	NUT, PLAIN OCTAGON .....	4
				UOC:842	
14	PAOZZ	78500	12275305	NUT, PLAIN, OCTAGON HUB BEARING INNER .....	2
				UOC:842,844	
15	PAOZZ	19207	7521650	WASHER, KEY .....	2
				UOC:842,844	
15	XBOZZ	19207	7007089	WASHER KEY .....	1